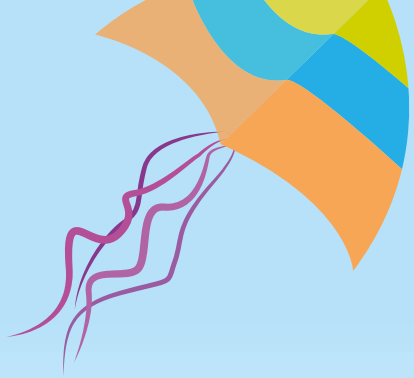


Warwick  
Schools  
Foundation

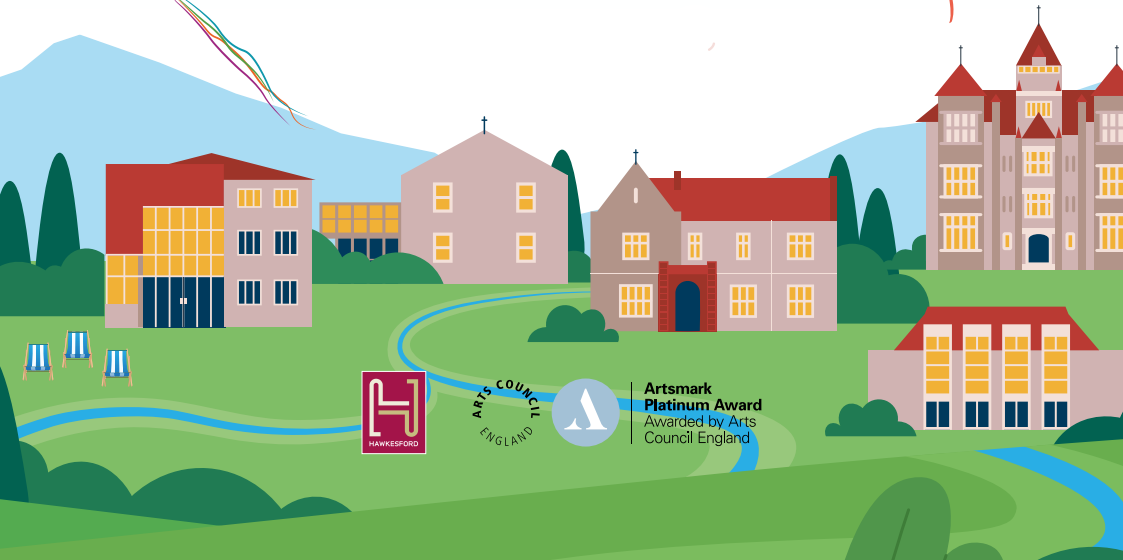
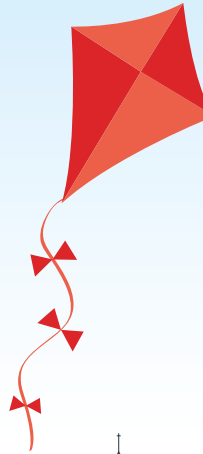


# home

warwick schools foundation

# festival

Summer 2024



Artsmark  
Platinum Award  
Awarded by Arts  
Council England

# Welcome 'HOME'...

Welcome to our Festival programme. This year is bigger than ever with exciting contributions from across the Warwick Schools Foundation, professional artists and beyond.

'Home', this year's theme, offers so much inspiration. As one Foundation of five schools, it felt appropriate to celebrate all that is unique about each one at each school's home. We want the Foundation's homes in Warwick and Leamington to be celebrated for all they offer but also extend the welcome to the community in both towns. With contributions from many of our alumni, we get to see how international and global the Warwick Schools Foundation community has truly become.





The planning team were full of creative ideas from the outset, and we are delighted to have such a full programme of activities across both our Warwick and Leamington sites for this celebratory season.

This programme contains a wonderful array of events, exhibitions and performances throughout June and into early July.

The first week of July will be our busiest in terms of concerts and shows and Saturday 6th July will be unmissable. The Warwick Campus will be given over to a busy programme showcasing the creativity of our Foundation, whilst over in Leamington, the Kingsley School will open its doors for a celebration of all that is special about its Home. Make sure to take in the five 'Home' structures, built and decorated especially for the Festival by each of the five schools. All are welcome to visit them.

Whether it be to enjoy a musical or theatrical event, absorb the stunning visual exhibits or simply picnic with the family, we look forward to welcoming you all Home.



# Festival 'must see' events

Here's just a small selection of exciting events from this year's Festival

## LOCAL SCHOOLS ORCHESTRAL DAY

**Tues 2nd July | 2.00pm**

A celebration of orchestral music with Foundation and Orchestra of the Swan musicians



## ROCK THE FOUNDATION

**Thurs 4th July | 7.00pm**

Rock and Pop bands from all Foundation Schools. A mini Festival in its own right!



## CORPS OF DRUMS

**Sat 6th July | 2.00pm**

Experience the incredible rhythmic power of a CCF drumline



## 5 STRUCTURES 1 'HOME'

**Sat 6th July | Various times**

Our 5 wooden structures represent the 5 schools in the Foundation



## THE REMINISCENCE PROJECT

**Sat 6th July | 11.30am**

King's High School students have been working alongside the residents of Parkview Care Home to create an original piece of verbatim theatre inspired by the stories of another generation





## MUSIC FOR A SUMMER'S DAY

Sat 6th July | Various times

Multiple ensembles performing indoors/outside around the campus



## AAJAO (WELCOME)

Mon 1st July | 7.00pm

A short film by Maanuv Thiara about grief, guilt and the meaning of 'HOME'



## LUCKY PIGEONS CIRCUS SHOW

Sat 6th July | Various times

A surreal modern fairy tale



## HOME: OUR CARING AND CREATIVE COMMUNITY

Sat 6th July | 1.00pm - 4.00pm

Celebrating The Kingsley School as part of the Home Festival



## ORCHESTRA OF THE SWAN – SONGS OF INNOCENCE AND EXPERIENCE

Thurs 27th June | 7.30pm

Love, loss, deception, obsession, beauty, innocence and understanding; all human life is here



# home

# Festival events

1 June - 5 July 2024

## WARWICK SCHOOL ANNUAL ART EXHIBITION

**From June 3rd**

**Venue:** Warwick Hall

Explore the incredible wealth of artistic talent displayed by our GCSE and A Level artists.



## THE KINGSLEY SCHOOL PREP SOLOISTS CONCERT

**Wed 12th June | 7.00pm**

**Venue:** The Kingsley School Hall

Enjoy a fabulous display of solo musicianship in this showcase from the Prep School students



## KING'S HIGH SCHOOL KEY STAGE THREE CONCERT

**Wed 12th June | 7.00pm**

**Venue:** Warwick Hall

King's High School students across Years 7-9 demonstrate their musicality in a showcase of orchestral, ensemble and solo pieces.



## PETER PAN JR

**Thurs 13th June - Fri 14th June | 7.00pm**

**Venue:** Bridge House Theatre

In Warwick Prep School's production, the adventure begins when Peter Pan and his mischievous sidekick, Tinker Bell, visit the bedroom of the Darling children late one night. With a sprinkle of fairy dust and a few happy thoughts, the children are taken on a magical journey they will never forget. Peter Pan embraces the child in us all so go on a journey from the second star to the right and straight on 'til morning – your entire family will be Hooked!



## WARWICK PREP SCHOOL CONCERT

**Tues 18th June | 7.00pm**

**Venue:** Warwick Hall

Join us to enjoy the wonderful music making of our Prep School children.



## ALADDIN JR

**Wed 19th - Thurs 20th June | 5.30pm**

**Venue:** The Kingsley School Hall

Step into a world of magic and wonder with The Kingsley Year 6 class, as they bring to life Disney's timeless tale, Aladdin, in their much-anticipated end-of-year production. From the bustling streets of Agrabah to the mystical Cave of Wonders, our talented students transport audiences on a journey filled with adventure, friendship, and the power of true love. With dazzling costumes, enchanting musical numbers, and a sprinkle of genie magic, this production promises to be a captivating spectacle for all ages. Join us as we witness the creativity, dedication, and sheer joy of our Year 6 class as they shine on stage and make their dreams take flight!



## THE ADDAMS FAMILY YOUNG@PART

**Wed 19th - Fri 21st June | 7.00pm**

**Venue:** Bridge House Theatre

King's High School's Key Stage Three production is a gloriously dark and funny reimagining of The Addams Family. Wednesday Addams, the ultimate princess of darkness, has grown up and fallen in love with a sweet, smart young man from a respectable family whom her parents have never met. She confides in her father and now, Gomez Addams must do something he's never done before – keep a secret from his beloved wife, Morticia. Everything will change for the whole family on the fateful night they host a dinner for Wednesday's "normal" boyfriend and his parents.



## WARWICK JUNIOR SCHOOL CONCERT

**Thurs 20th June | 7.00pm**

**Venue:** Warwick Hall

Come and experience a little bit of everything as the Junior School boys demonstrate their musical skills and versatility!



## WARWICK SCHOOL MUSIC SCHEME CONCERT



**Tues 25th June | 5.00pm**

**Venue:** Warwick Hall

Every year at Warwick School Year 7 pupils take up an instrument – many for the first time. Join the wonderful spectacle of over hundred young people making music together led by our astonishing music department.

## SHREK THE MUSICAL JR



**Wed 26th - Fri 28th June | 7.00pm**

**Venue:** Bridge House Theatre

In Warwick School's lower-school production everyone's favourite ogre is back! Shrek The Musical JR. is a hilarious stage spectacle, based on the Oscar-winning smash hit film and outrageous Broadway musical. It's a "big bright beautiful world" as Shrek leads a cast of fairy-tale misfits on an adventure to rescue a princess and find true acceptance. Part romance and part twisted fairy-tale; Shrek The Musical JR. is an irreverently fun show with a powerful message for the whole family. Beauty is in the eye of the ogre!

## ORCHESTRA OF THE SWAN – SONGS OF INNOCENCE AND EXPERIENCE



**Thurs 27th June | 7.30pm**

**Venue:** Warwick Hall



ORCHESTRA OF  
**The Swan**

Warwick Schools Foundation and the Orchestra of the Swan have joined forces in a ground-breaking partnership, aimed at creating a centre of musical excellence at Myton Road. This unique partnership provides access for talented children across Warwickshire to the Foundation's outstanding music facilities, giving young people the opportunity to discover and experience the joys of music. On 27 June, the Orchestra will once again perform at Warwick Hall for their third concert of the season here. It will star Roderick Williams, a star turn at the Coronation of King Charles III, who is one of the most sought-after baritones in the country, a global recitalist and opera singer, and a hugely respected composer.



**AAJAO (WELCOME)****Mon 1st July | 7.00pm****Venue:** Bridge House Theatre**A short film by Maanuv Thiara – about grief guilt and the meaning of 'HOME'**

AAJAO (Welcome) is the story of Taj, a second-generation immigrant caught between two worlds. Following the loss of his beloved father, Taj must find a way to pay tribute to him by mending broken bridges with the community he left behind. Scared of losing the last connection to his roots, Taj must learn to embrace both parts of his identity.

A story of grief, guilt, and the meaning of 'HOME' with a culturally significant voice – AAJAO speaks to everyone. Written and directed by Maanuv Thiara (OW) the film will be screened with a special Q&A.

**LOCAL SCHOOLS ORCHESTRAL DAY WITH FOUNDATION AND ORCHESTRA OF THE SWAN MUSICIANS****Tues 2nd July | 2.00pm****Venue:** Warwick Hall

A celebration of orchestral music with Foundation and Orchestra of the Swan musicians.

**OVER THE WALL BY JAMES SAUNDERS****Tues 2nd July | 5.00pm****Venue:** Drama Studio, Warwick School**Presented by Drama Club**

There was once an island, if you believe it, on which lived a people no better and no worse than most. But what made this island different from any other you may have in mind was a wall, which ran across the island and which had been there as long as anyone could remember, and as long as anyone they could remember could remember. They called it 'The Wall'. Who built it, why was it built, or what was behind it nobody knew or cared – nobody, that is, except one man.

**A MEDLEY OF SHORT PERFORMANCE PIECES INSPIRED BY THE THEME 'HOME'****Tues 2nd July | 7.00pm****Venue:** Bridge House Theatre

Chosen by The Kingsley School pupils, the evening will include a spectacular showcase of drama, dance, music, poetry and fashion design.



## OCEAN ACADEMY



**Wed 3rd July | 9.15am - 4pm**

**Venue:** Warwick Hall

The Motheroceanblue Ocean Academy will spend the day with year 8 (WS) and encourage pupils to explore coral and reef systems, how they function, how they are being damaged by human activity, and vitally – how they should work.

## ANNIE JR



**Wed 3rd July | 4.30pm**

**Venue:** King's High School Drama Studio

With equal measures of pluck and positivity, little orphan Annie charms everyone's hearts despite a next-to-nothing start in 1930s New York City. Based on the popular comic strip and adapted from the Tony Award-winning Best Musical, with a beloved book and score by Tony Award winners, Thomas Meehan, Charles Strouse and Martin Charnin, Annie JR. features everyone's favorite little redhead in her very first adventure.

## THE CONTEMPORARY CHOIR – AN OPEN REHEARSAL



**Wed 3rd July | Youth Choir – 6.15pm | Adult Choir – 7.30pm**

**Venue:** Warwick Hall

This Warwickshire Choir is a rather special place. More like a musical family than simply friends – the laughter is vibrant and often, the endorphins are aplenty and the atmosphere is thoroughly inviting. Come and see them in action in this open rehearsal led by Melissa Asbridge.

## ROCK THE FOUNDATION



**Thurs 4th July | 7.00pm**

**Venue:** Bridge House Theatre

Rock and Pop bands from all Foundation schools. A mini Festival in its own right!

## 'HOME' FESTIVAL SHARING EVENT



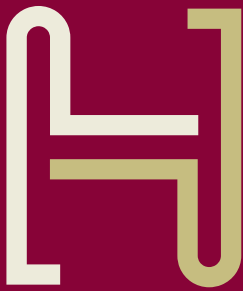
**Fri 5th July | 2.15pm**

**Venue:** Warwick Prep School

Each year group from Warwick Prep School will present their work inspired by the Festival theme. Parents are invited to explore different collections of work around the playground and there will be a variety of performances to enjoy.

Choose the  
*family run*  
estate agents that always  
*perform...*

## For the love of home.



**HAWKESFORD**

Estate Agents &  
Chartered Surveyors

We're an honest, family run, independent estate agent, operating from offices in Warwick and Leamington, with a dedicated team in each town.

We've been selling and finding new homes for families across the Warwick & Leamington Spa area for over 30 years.

Leamington Spa: **01926 430553**

Warwick: **01926 411480**

[hawkesford.co.uk](http://hawkesford.co.uk)

*Make Hawkesford your next move*



# Family day

Saturday 6 July 2024

The final Saturday of the Warwick Schools Foundation Summer Festival always culminates in a splendid array of creative activity for the whole family and this year is no different. With pupils, community and professionals alike representing theatre, music, circus, dance, spoken word, and fine art there truly is something for everyone. Use this as an opportunity to explore our beautiful campuses and discover creativity in places you may never have been before. If you hear music wafting along on the breeze, why not follow it? We encourage you all to get along to as many performances as you can, enjoy a glass of something fizzy, secure a deckchair, and – most importantly – make yourselves at ‘HOME’!

## THE KINGSLEY SCHOOL

### Home: Our Caring and Creative Community

We are delighted to be celebrating The Kingsley School as part of the Home Festival at the Leamington campus. Between 1.00pm and 4.00pm a range of family activities will be taking place including:

- Musical performances
- Drama and dance performances
- A fashion show/display
- A selection of arts and crafts
- Annual art exhibition
- Exhibition of our Home art competition
- Kingsley alumni ‘view from our window’ display
- Alumni activities – the prequel to our 140 anniversary
- Kingsley’s contribution to the 5 structures 1 ‘Home’ project. The ‘Beehive’ has been developed in collaboration with the British Beekeepers Association
- Various charity stalls and activities, including representation from our chosen charities and student led activities.
- A “Row to Warwick” activity – linking our two campuses
- And much much more...

home

## 5 STRUCTURES 1 'HOME'



### Various times

**Venue:** Warwick and Leamington Campuses

#### Wooden structures containing artefacts by pupils

Our wooden structures represent the Schools in the Foundation. Each structure or 'HOME' will contain objects which symbolise 'HOME' and have been created by the students of the Foundation over the past few months. Enjoy a journey around the structures and pause to explore the meanings of 'HOME' that each contains.

## TOM PAYNE – THE BOAT



### From 12 noon

**Venue:** Warwick School – Outside the Art department

Tom Payne is an international selling abstract artist based in the UK. Tom takes inspiration from the natural landscape, particularly the sea, sky, desert, and space. This includes the rural aspects around his home in Warwickshire, along with the coastal beauty of Dartmouth, Devon and the desert in Dubai when visiting family. He uses texture to drum up atmosphere and drama and focuses on bright contrasting colours, working to create scenes from outer space or turbulent skylscapes and seascaapes. We are very excited to see what he does in collaboration with Warwick School's art pupils with our much-loved boat.

## MUSIC FOR A SUMMER'S DAY



### Various times

**Venue:** Around the Warwick Campus

#### Multiple ensembles performing indoors/outside

Warwick Schools Foundation enjoys a long and proud tradition of music of the highest possible standard and with the broadest and inclusive accessibility. All of the choirs, bands, orchestras, groups and ensembles feed into the musical education that the pupils receive, and add to the richness of the classroom teaching that we deliver. Throughout the day ensembles will pop up and share their musicality in the most wide-ranging styles and forms.

## WHAT DOES 'HOME' MEAN TO ME?



### All day

**Venue:** Display boards around the Warwick Campus

#### Open project

'HOME' means something different to us all. Through the Summer term this question has been explored by the young people of the Warwick Schools Foundation. This exhibition will feature the work of many of our pupils.

## TRY IT! SESSIONS



### Various times

**Venue:** Various locations

Have you ever wanted to try something but needed a creative Festival atmosphere to inspire you. Look no further! Try It! Sessions will be taking place through the day.

## LUCKY PIGEONS CIRCUS SHOW



### Various shows and workshop

**Venue:** Warwick Campus

**Guest Professional Theatre Company – Brain Fools Theatre Company**

Lucky Pigeons is a surreal modern fairy tale. It explores themes of dehumanisation of marginalised groups such as homeless people or migrants and sprinkles some hope and plants the seed for inclusivity. It is rooted in the awareness that our situation can seem hopeless but we believe that if we use our humanity and kindness we can create a better future.

## WILL WE IMPRESS GOOD QUEEN BESS?



### Various times

**Venue:** Around the Warwick Campus

In 1575 Robert Dudley laid on a lavish music and theatre event at his home, Kenilworth Castle. His intention was to win the heart of the visiting Queen, Elizabeth I. Performers from the Royal Birmingham Conservatoire to join us to provide their own promenade performance taking inspiration from Dudley's big show. Join our troupe of travelling bards and vagabonds as we pull out all the stops to impress Good Queen Bess.

## A SPECIAL INVITATION FOR ALL OLD BOYS AND GIRLS OF THE FOUNDATION



### All day

**Venue:** Various locations

Our Alumni teams are keen to welcome as many old boys and girls to our Family Day and will be providing special exhibitions, events and opportunities to reconnect. Please contact your relevant Alumni team for more details.

## WARWICKSHIRE OPEN STUDIOS



### 10am to 1pm

**Venue:** King's High School Art Department

King's High School GCSE and A Level artists exhibit their inspiring work as part of this county-wide celebration of quality visual arts. From passionate amateurs to professional artists, across all mediums, Warwickshire Open Studios showcases over 400 artists at 121 venues.

## SPEECH AND DRAMA FESTIVAL



**10.00am**

**Venue:** Warwick School Drama Studio

Join us for the Speech and Drama Festival. Pupils from across the Foundation will be presenting a wide variety of pieces spanning poetry, acting and Shakespeare in front of an invited adjudicator and a public audience. Be prepared to see some astonishing young performers in action!

## HASTINGS! A NEW MUSICAL



**10.15am**

**Venue:** Bridge House Theatre

Bayeux-zinga! The daring story of the last Anglo-Saxon King of England and his dynamic relationship with William of Normandy is re-told in Wyatt & Perry's hit\* new musical. With energetic songs such as 'Too Much Mud for Two Men', 11th Century England has never seemed more exciting!

Will Harold let his eye for ambition consume him? Or will he see beyond his own desires? After all, there's more than one way to lose sight of the throne!

An exclusive preview of the songs and dialogue BEFORE the show is produced - who knows...one day on the West End Stage!

## YEAR OUT DRAMA COMPANY PRESENTS...



**10.30am**

**Venue:** Stevens Quad

Year Out Drama present a sneak peek behind the curtain of their summer rehearsals. This work has been created and devised by Alastair McPhail and members of the company. Year Out Drama is an intensive practical drama course, based in Stratford upon Avon, providing an exciting and stimulating full-time programme, encompassing a wide range of theatre-based skills. Alastair trained at Royal Central School of Speech and Drama and has been Assistant Course Director of Year Out Drama since 2018.

## THE REMINISCENCE PROJECT



**11.30am**

**Venue:** King's High School Hall

King's High School students have been working alongside the residents of Parkview Care Home to create an original piece of verbatim theatre inspired by the stories of another generation. 'Reminiscence' will celebrate what 'HOME' means to different members of our local community as well as to the students from our schools. The piece will be performed by the young people alongside some of the residents themselves.

## TRY IT! OVER 60S CREATIVE DANCE



**11.30am**

**Venue:** King's High Dance Studio

Come along and try this new contemporary-based dance class developing strength, mobility and technique and leading to creative movement based on different themes with potential performance opportunities.

No experience necessary. Facilitated by professional dancer and choreographer Kath Waters.

## THE CARDBOARD COLLECTION



**1.30pm**

**Venue:** Bridge House Theatre

**Bridge House Young Company**

Allow the Bridge House Young Company to take you on a journey away from home, into a land of folklore, wonder and lots and lots of cardboard. Three pieces in one, The Cardboard Collection explores well-known tales in ways you might not expect. Resident to the Bridge House Theatre, BHYC are a youth theatre community open to anyone aged 7-18 who is passionate about drama and performance.

## RENAISSANCE DANCE



**1.30pm and 3.00pm**

**Venue:** Stevens Quad and others

Be transported back in time as choreographer and professional dancer, Kath Waters, leads a talented troupe of dancers in a series of routines from Renaissance England.

## CCF CORPS OF DRUMS



**2.00pm**

**Venue:** The Plaza

The Corps of Drums was generously funded by a number of Old Warwickians who fondly remember their time in the CCF Band. Experience the incredible rhythmic power of a CCF drumline.



**CRICKET****From 2.00pm****Venue:** 1st XI pitch**The Homecoming Test and fastest bowler competition**

As part of a special invite to OWs we are delighted to be holding a special Headmaster's XI Cricket match against current pupils of the school. Contact the Director of Cricket Simon Francis for more details.

**IN CONVERSATION WITH ARTHUR DARVILL****4.00pm****Venue:** King's High School Hall

Olivier Award winning actor Arthur Darvill, star of Doctor Who, Oklahoma and regular feature in National Theatre productions, makes a personal appearance at the Festival and shares stories about his life and career so far. Not to be missed if you have an interest in pursuing a career in TV and Theatre!

**OPEN MIC AND POETRY SLAM****5.00pm****Venue:** Rosconn Auditorium**Bridge House Young Company**

The Bridge House Young Company present a series of powerful pieces exploring the theme of 'HOME' from a wide range of moving and powerful perspectives.

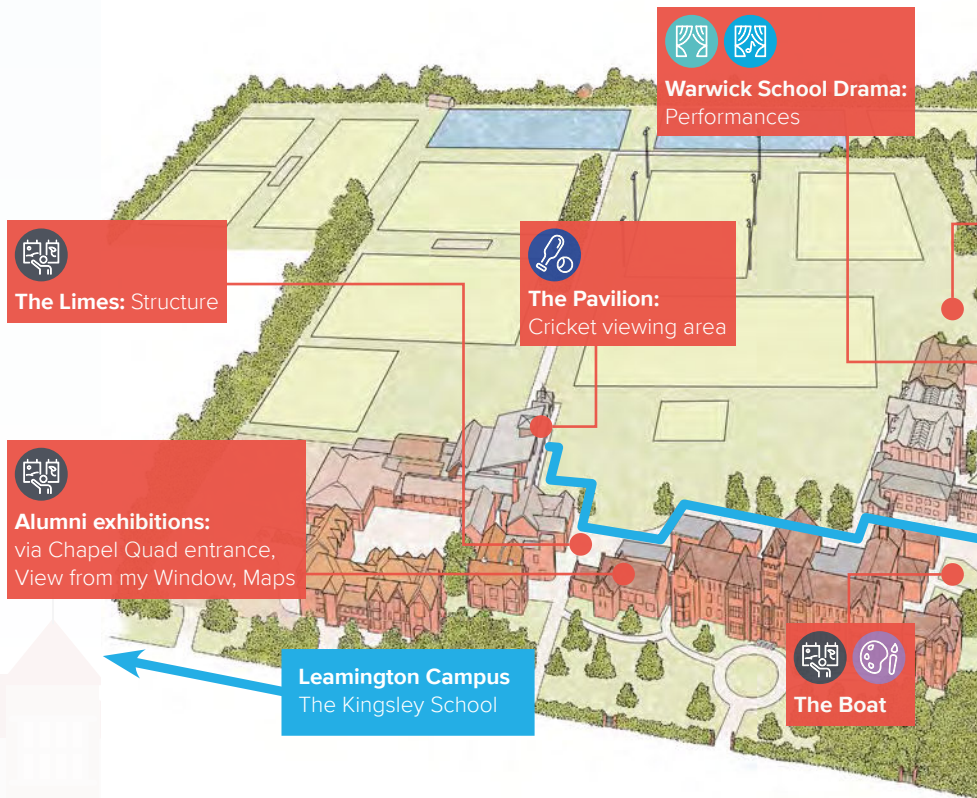
**THE IMPROV SHOW****5.30pm****Venue:** Bridge House Theatre**Drama students make it up on the spot**

Our Improv group has been established over several years and this special event as part of the Family Day will provide the group with an opportunity to show their skills in making up scenes, sketches and even songs 'on the spot'.

**AND MANY MORE EVENTS**

# Warwick Campus

Saturday 6 July 2024



## EVENT TYPES



DANCE



CONCERT



EXHIBITION



THEATRE



MUSIC



LUNCH



FAMILY



FREE  
TICKET



CHARGEABLE  
TICKET



SPOKEN  
WORD



CRICKET



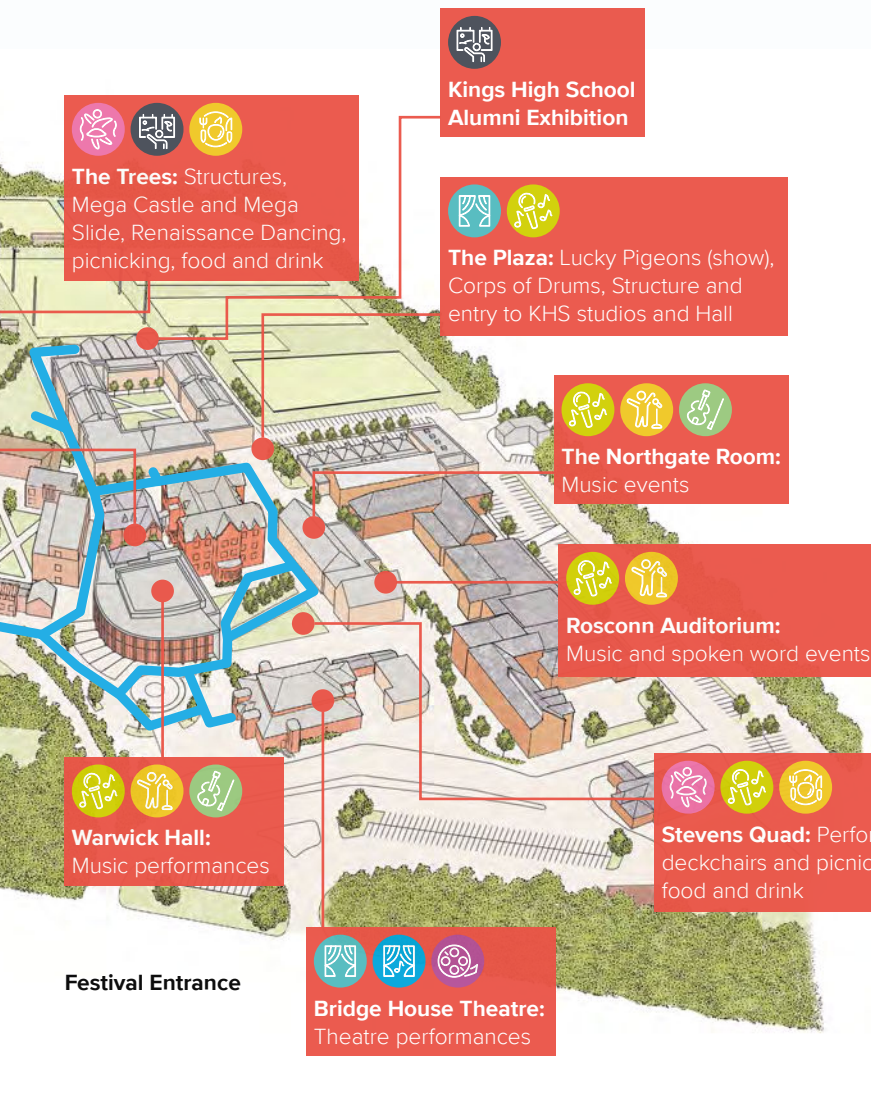
MUSICAL  
THEATRE



FILM



WORKSHOP



**Kings High School  
Alumni Exhibition**



**The Trees:** Structures,  
Mega Castle and Mega  
Slide, Renaissance Dancing,  
picnicking, food and drink



**The Plaza:** Lucky Pigeons (show),  
Corps of Drums, Structure and  
entry to KHS studios and Hall



**The Northgate Room:**  
Music events



**Rosconn Auditorium:**  
Music and spoken word events



**Warwick Hall:**  
Music performances



**Stevens Quad:** Performances,  
deckchairs and picnicking,  
food and drink



**Bridge House Theatre:**  
Theatre performances

**Festival Entrance**

— THE BLUE THREAD WILL GUIDE YOU ROUND CAMPUS

# Key Dates 2024



Warwick Schools Foundation has a range of open events throughout the year to find out more about the schools and what they offer.

If you're new to the Foundation – or even if you're not – and you'd like to find out more, please visit our schools' websites where you can book to visit during an open day.



Warwick  
Preparatory  
School



WARWICK  
JUNIOR SCHOOL



THE  
KINGSLEY  
SCHOOL



King's High  
School



WARWICK  
SCHOOL

## Dates

**The Kingsley School Open Afternoon** – Tuesday 10 September 2024

**Warwick Prep School Open Morning** – Saturday 21 September 2024

**Warwick Senior School Open Morning** – Saturday 28 September 2024

**King's High School registration deadline** – Tuesday 1 October 2024

**Warwick Sixth Form Open Evening** – Tuesday 8 October 2024



# The Warwick Schools Foundation

## Where creativity finds a home



**Artsmark  
Platinum Award**  
Awarded by Arts  
Council England

Creativity has long held an essential place in our community. One only needs to visit both the Warwick and Leamington campuses to see first-hand the value we place on inspirational spaces that support creativity of the very highest standards for our young people and community. Shared by all, and now nearly 25 years-old, the Bridge House Theatre is an established and much-loved venue for theatre and music. In 2017, the Foundation opened the wonderful Warwick Hall; a space for large-scale music events that never fails to impress performers and audiences alike. The new King's High School buildings have brought even more beautiful spaces to the Warwick campus, including King's Hall and state-of-the-art studios for drama, dance and visual art. The recently completed King's High and Prep School music building, with its own recital spaces, enriches the Warwick campus further.

At our Leamington campus, at The Kingsley School, we are about to embark upon a significant investment in our facilities ahead of the next academic year. Around £1 million is being invested in redeveloping the Senior School Learning Resource Centre, gym and garden – which is a beautiful space to exhibit creativity and welcome the community to our home.

But it's not just the spaces. Investment in creative practitioners benefits the community in many more ways. The Foundation supports a rich and diverse programme of visiting artists to enhance the taught curriculum. Skilled musicians, theatre makers and artists continue to support the equally skilled arts teaching staff to offer the broadest of ranges of opportunities for pupils. The results are permanent, and this creative investment ensures students are able to make a significant contribution to the world. We were thrilled to be recognised by the Arts Council and awarded Artsmark Platinum in 2023 – the highest award available to schools in recognition of the range and quality of arts provision. Alongside our commitment to the pupils who attend Foundation schools we are equally committed to the role we can play in supporting creativity in everyone's lives. From hosting community events for all, bringing world class artists to the area, to leading progressive educational conferences we are proud to share our creative 'home' with everyone.

# Thanks

We are grateful for all the contributions made by the organising committee of staff from across the Foundation and for all the pupils, teachers and support staff who have made this Festival possible.



Warwick School is embarking on a new exciting journey, where we are working under the guidance of the community of Ponta Do Ouro, Mozambique, to facilitate the setting up and long-term running of two nurseries through to primary schools. The buildings are in a state of disrepair with leaking roofs, deteriorating infrastructure, which are not equipped to support the development of the children. Events will be held throughout the Festival to support this cause with prizes to be won! Any donations towards this will be greatly appreciated!

Our sponsor



**CHILDCARE  
VOUCHERS  
& TAX-FREE  
CHILDCARE\***

Warwick  
Schools  
Foundation



## Sports Camps

Join us on our Warwick Campus for the new and exciting sports camps! Led by certified coaches, our camps offer a fun, safe environment for all skill levels. With top-notch facilities including a World Rugby standard 3G pitch, sports halls, and classrooms, you'll hone your skills while making lasting memories.



## Holiday Action

With over 20 years' experience, Warwick Schools Foundation's 'Holiday Action' programme provides a varied and engaging range of holiday courses for boys and girls from Reception age up to 14 years old. The range of courses includes Swimming, Art and Craft, Fencing, Multi-Sports, Pottery, Martial Arts, Cookery, Kayaking, Wall Climbing and Animation to name but a few.



## Swim School Crash Courses

During Holidays we offer our Swim School members the opportunities to book onto crash courses and private lessons to get extra practice with their swimming. We also offer Clinics that give opportunities for extra practice on specific skills such as Breaststroke and diving clinics.



SCAN



[warwickschoolsfoundation.co.uk/community](https://warwickschoolsfoundation.co.uk/community)

\* Childcare/tax-free vouchers can be used where applicable. Activities are subject to availability and will take place at Warwick Schools Foundation venues

# How to find us

Our sponsor



## Warwick Campus

Warwick Campus, Warwick Schools Foundation, Myton Road, Warwick CV34 6PP

### By car:

#### Bridge House Theatre, Visitor Car Park

Enter from Myton Road.

#### King's High School Car Park and Warwick Prep School Car Park

Enter using the junction on Banbury Road.

#### Warwick Junior School Car Park

Enter from Myton Road.

*Two disabled car parking spaces can be found in the Bridge House Theatre carpark off Myton Road. There are a further six disabled car parking spaces in the Warwick Prep School car park, and three at King's High School.*

### By train:

Warwick Railway Station is a picturesque 18-minute walk from the Warwick Campus, over the River Avon, including a view of the stunning Warwick Castle.

### By bus:

X18 (operated by Stagecoach) between Stratford-upon-Avon and Coventry is very convenient, stopping just outside the entrance to the Warwick Campus.

For further information, email the Bridge House Theatre Box Office: [boxoffice@bridgehousetheatre.co.uk](mailto:boxoffice@bridgehousetheatre.co.uk)

## Leamington Campus

Leamington Campus, Warwick Schools Foundation, The Kingsley School, Beauchamp Avenue, Leamington Spa, Warwickshire, CV32 5RD

### By car:

There is plenty of on-street parking around The Kingsley School (free for 2 hours)

Nearest car park is Covent Garden Surface – open all day Mon-Sun (max stay 4 hours £5.10)

### By train:

The Kingsley School is a 20-minute walk (via Bedford Street) from Leamington Spa Railway Station, crossing the beautiful River Leam.

### By bus:

Both the X18/ X17 (operated by Stagecoach) stop on Beauchamp Avenue, just a 3-minute walk from The Kingsley School.



Warwick  
Preparatory  
School



WARWICK  
JUNIOR SCHOOL



THE  
KINGSLEY  
SCHOOL



King's High  
School



WARWICK  
SCHOOL

Warwick  
Schools  
Foundation



Warwick Independent Schools Foundation, a registered charity, number 1088057  
A company limited by guarantee; Registered in England; company number 4252305  
Registered office: Warwick School, Myton Road, Warwick CV34 6PP